

SEE Cannon Ultra-low Lux Marine Night Vision Camera



The answer to, *"What's out there?"*

SEE Cannon Marine Night Vision Camera



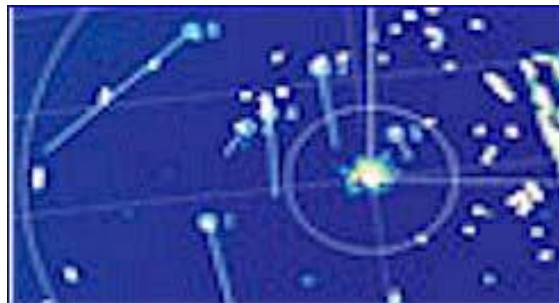
The SEE Cannon Marine Night Vision Camera answers the question mariners have asked since the first time anyone ventured onto the water at night: *"What's out there?"*

Nighttime navigation is hazardous simply because you can't SEE!
Even with a good radar system, you are essentially navigating blindly.



(Actual nighttime shot of Sarasota Harbor)

Radar can display targets but it can only tell you WHERE they are.
You know they're out there, but you still don't know WHAT they are.



You have to decide for yourself what it is you're seeing.

And often, it isn't what you thought it was!

The SEE Cannon Marine Night Vision Camera takes away the uncertainty. No more guesswork- no more wondering, because SEE Cannon actually lets you SEE what's out there!



Compare the difference between normal daylight cameras, thermal imaging cameras, and the SEE Cannon Ultra-low Lux camera. With the SEE Cannon, the small boat and its crew are clearly visible, even in near-total darkness conditions.

There is no guesswork- no mistaking what the radar screen was displaying.

With the SEE Cannon Marine Night Vision Camera, your captains can say goodbye forever to navigating blindly at night. Not only will the SEE Cannon will show them other vessels, it will clearly display hazards such as floating logs or debris in the water, navigation buoys, and anything else that's out there! They will be able to choose the safest navigation routes, including entering and exiting any harbor or port.

They can also use the SEE Cannon's capabilities when docking or undocking and other operations. It's uses are unlimited!

The SEE Cannon is not a replacement for radar.
It's designed to work in conjunction with your radar system,
allowing you or your captains to navigate and work safely at night.

The SEE Cannon was designed and engineered especially for marine applications. It's rugged and durable construction provide years of quality service – it can take rough handling and rough weather.

It is also priced low enough to make it affordable for any type of operation-large or small.

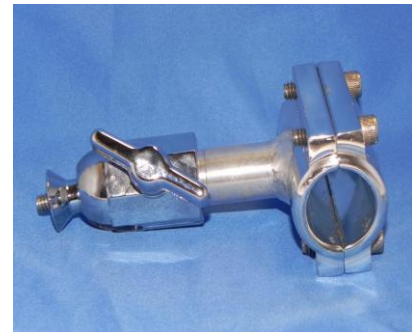
The SEE Cannon Marine Night Vision Camera – the answer to "*What's out there?*"

Corporate Headquarters
Night to Day Camera Systems, Inc. 4401 Long Prairie Road #400
Flower Mound Tx 75028 Mobile 214-202-2500
Fax 972-673-0992
scott@nitetoday.com

Ram Mount (Supplied)



Rail Mount



Pick-up element:

1/2 interline transfer CCD Image sensor

Number of total pixels

811(H) x 508(V)

795(H) x 596(V)

Number of effective pixels

768(H) x 494(V)

752(H) x 582(V)

Unit cell size

8.4um(H) x 9.3um(V)

8.6um(H) x 8.3um(V)

Shutter speeds

EI: 1/60 sec. - 1/100,000 Sec.

FL; 1/100 sec.

OFF: 1/60 sec.

EI: 1/50 sec. - 1/100,000 sec.

FL: 1/120 sec.

FL; 1/50 sec.

Minimum illumination

0.0003 lx F1.4 (AGC HI)

Synchronizing system

Internal sync.

Video output: IVp-p, 7 unbalanced

Resolution (H): S70TVL (Center)

S/N ratio: 46dB (AGC OFF)

AGC: HI: 5-50dB, LO: 5-32dB

Back light compensation: ON (Center + lower)

Gamma correction: 0.45

Power supply: DC12V±; Current: 16

Operating temperature: -lot - +40°C

Storage temperature: -30°C - +70°C

Dimensions:(WxHxL) 35.5 x 55x 63 (mm)

Sea Sucker Mount



Optional Monitor



Night To Day Camera Systems, Inc.
4401 Long Prairie Road #400
Flower Mound, TX 75028
Mobile 214-202-2500
Fax 972-673-0992